

# Help us design Bissell 307

A group of students at the Faculty of Information are working to transform Rm 307 into a studio workspace (like a makerspace, but please don't let that term constrain your ideas).

We need your help getting started:

1. Take a few minutes to think about what you could do in a space like this and how you could use it
2. Draw and write your ideas here. You can include tools, people, equipment, communities, concepts, a cup of tea....
3. Hand your sheet back to me, OR drop it in mailbox A20 (Dan S.), OR email it to [jess.whyte@gmail.com](mailto:jess.whyte@gmail.com), OR bring it to our first design session (May 19, 10-12 in Rm 307).

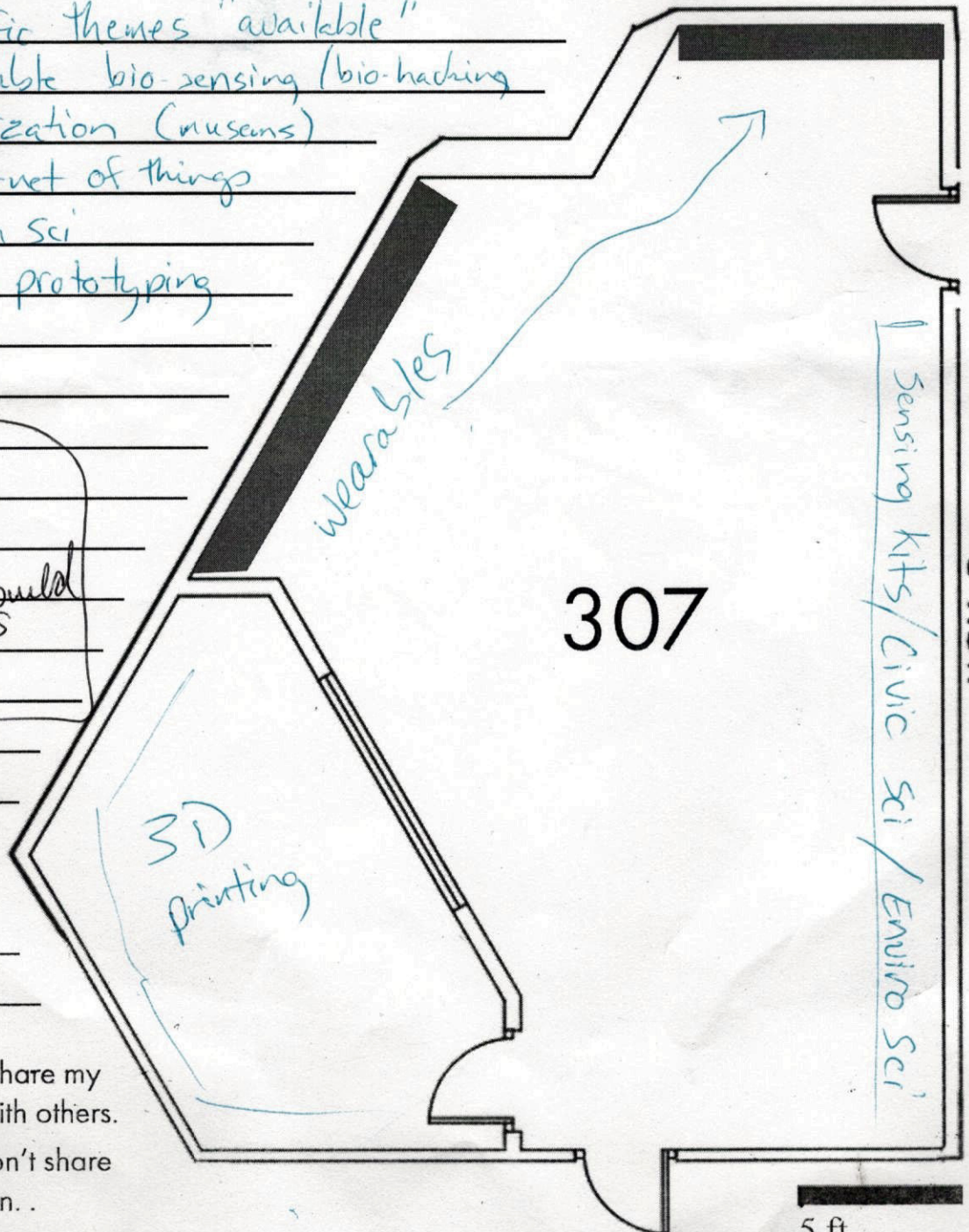
Your turn: \_\_\_\_\_

Make specific themes "available"

- Wearable bio-sensing (bio-hacking)
- Digitization (museums)
- Internet of things
- Citizen Sci
- Rapid prototyping

NOTES:

↳ modular build growth, "as needed"



Yes, you can share my contribution with others.



No, please don't share my contribution.

5 ft