

# Help us design Bissell 307

A group of students at the Faculty of Information are working to transform Rm 307 into a studio workspace (like a makerspace, but please don't let that term constrain your ideas).

We need your help getting started:

1. Take a few minutes to think about what you could do in a space like this and how you could use it
2. Draw and write your ideas here. You can include tools, people, equipment, communities, concepts, a cup of tea....
3. Hand your sheet back to me, OR drop it in mailbox A20 (Dan S.), OR email it to [jess.whyte@gmail.com](mailto:jess.whyte@gmail.com), OR bring it to our first design session (May 19, 10-12 in Rm 307).

Your turn:

- Definitely love to have monitors (monitor 1-5) which can be plugged to personal laptops to work

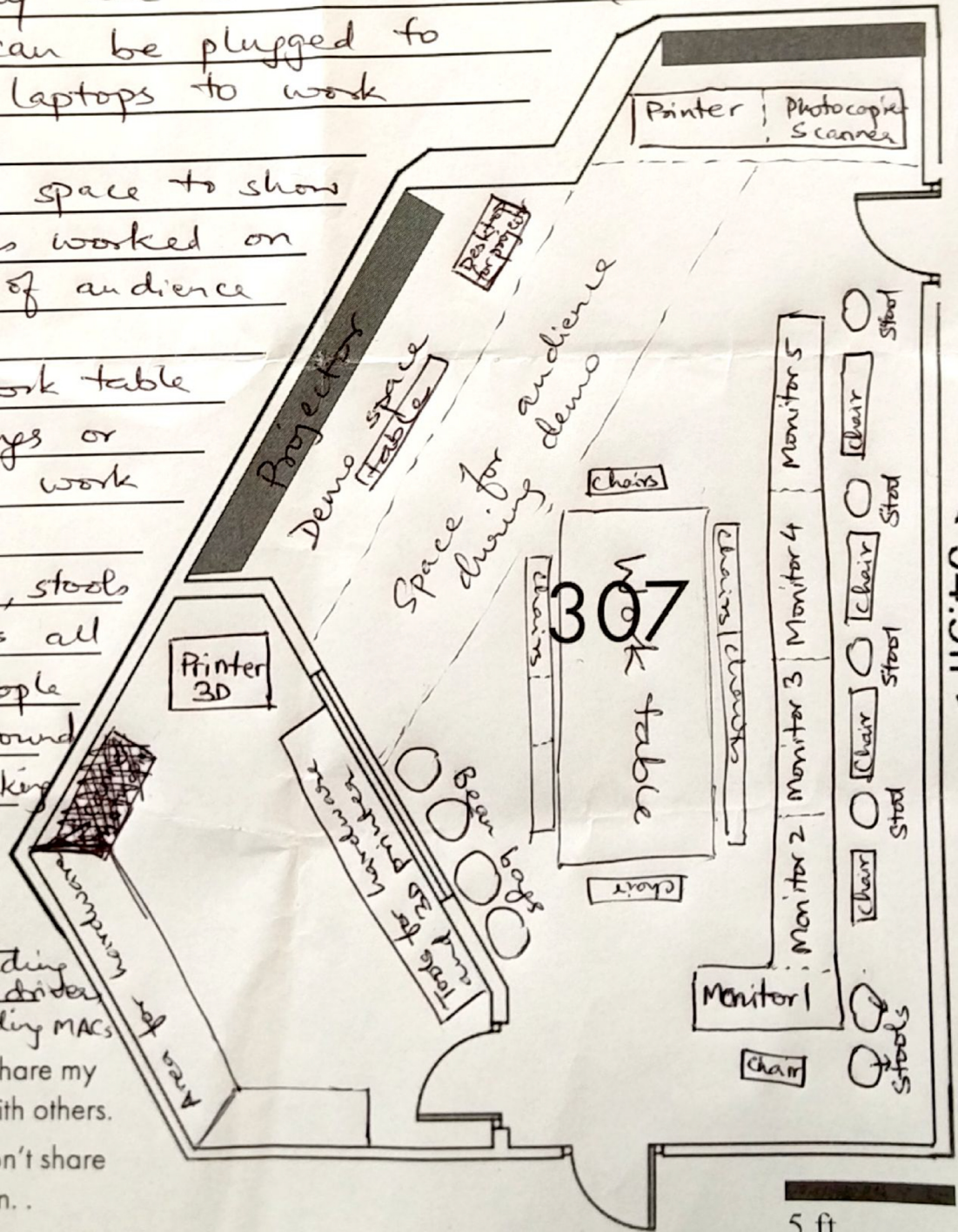
- A demo space to show what was worked on in front of audience

- A big work table for meetings or individual work

- Bean bags, stools and chairs all over for people to move around without making noise

- Tools for hardware including soldering iron, screw driver for all machines including MACs

- Yes, you can share my contribution with others.
- No, please don't share my contribution.



< 34.5ft >

5 ft